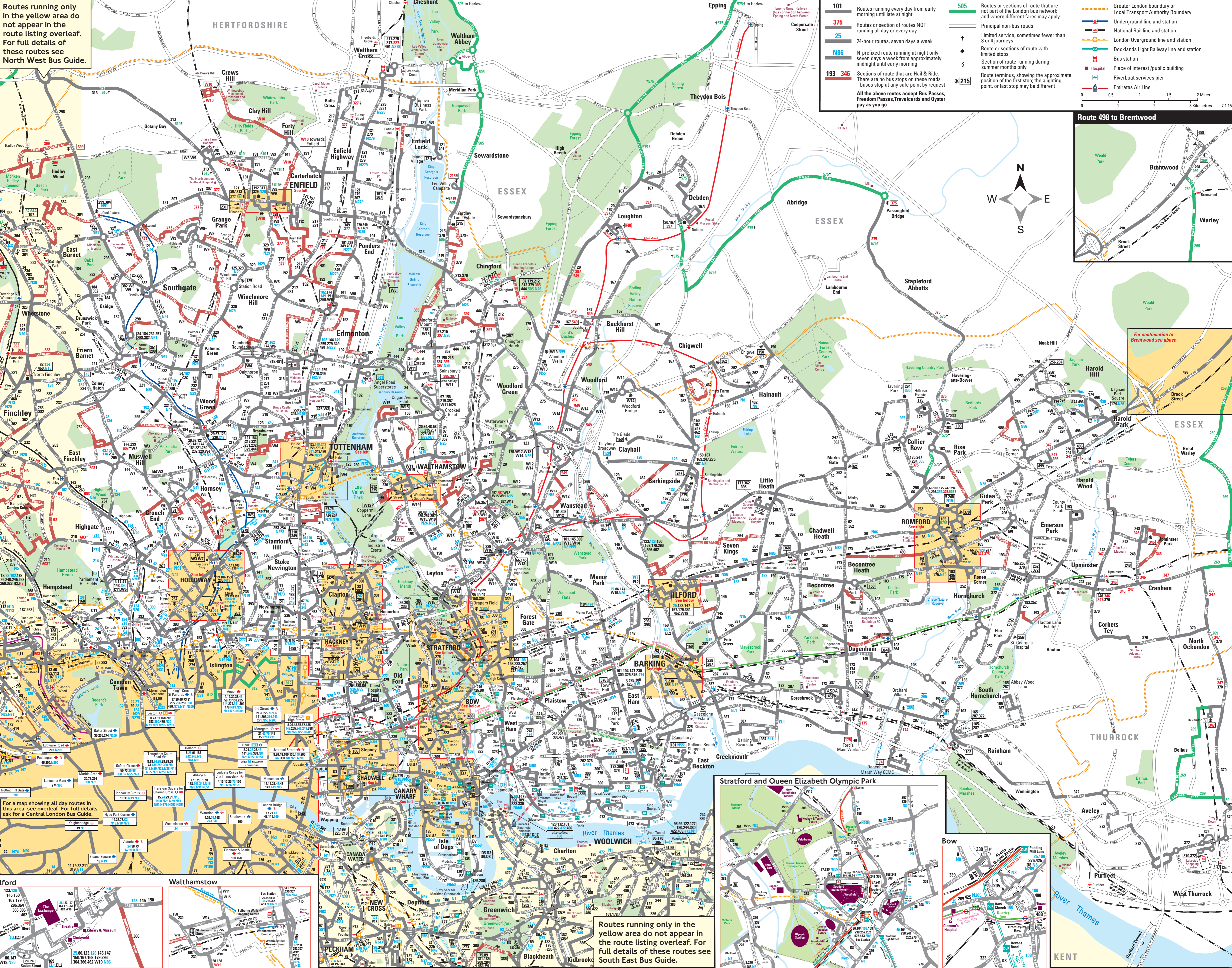


Routes running only in the yellow area do not appear in the route listing overleaf. For full details of these routes see North West Bus Guide.

101	Routes running every day from early morning until late at night	505	Routes or sections of route that are not part of the London bus network, and where different fares may apply
375	Routes or section of routes NOT running all day or every day		Principal non-bus roads
25	24-hour routes, seven days a week	†	Limited service, sometimes fewer than 3 or 4 journeys
N86	N-prefixed route running at night only, seven days a week from approximately midnight until early morning	◆	Route or sections of route with limited stops
193 346	Sections of route that are Hail & Ride. There are no bus stops on these roads - buses stop at any safe point by request	§	Section of route running during summer months only
	All the above routes accept Bus Passes, Freedom Passes, Travelcards and Oyster pay as you go	*215	Route terminus, showing the approximate position of the first stop; the alighting point, or last stop may be different

Route 498 to Brentwood

Far continuation to Brentwood see above



Ilford

Walthamstow

Greenwich

Routes running only in the yellow area do not appear in the route listing overleaf. For full details of these routes see South East Bus Guide.

Stratford and Queen Elizabeth Olympic Park

Bow

West Thurrock